

Intermediate certifikat installation på Windows Server

v. 1.3

Følgende vejledning beskriver hvordan man importerer et intermediate certifikat på en Windows Server.

For support og hjælp til anvendelsen af denne vejledning kan du kontakte FairSSL på e-mail support@fairssl.dk eller telefon +45 77 345 678. For certifikat bestilling, certifikat sammenligninger og flere vejledninger se websitet på www.fairssl.dk.

Hvis serveren er tilgængelig fra internettet, kan installationen efterfølgende testes gratis på www.fairssl.dk/ssltest/

Indholdsfortegnelse

Intermediate certifikat installation på Windows Server	1
Import af mellemudsteder certifikat ("Intermediate Certificate Authority")	2
Intermediate certifikater	4
GlobalSign Intermediates	4
GlobalSign DomainSSL – For certifikater udstedt efter 26. juni 2011	4
GlobalSign DomainSSL til Exchange og Lync/OCS – Efter 26. juni 2011	5
GlobalSign Organization – For certifikater udstedt efter 26. juni 2011	5
GlobalSign Organization til Exchange og Lync/OCS – Efter 26. juni 2011	6
GlobalSign Extended.....	6
AlphaSSL Intermediates.....	7
AlphaSSL Intermediate Root CA – For certifikater udstedt efter 30. maj 2011	7
VeriSign Intermediates	7
GeoTrust Intermediates	7
Thawte Intermediates	7

VIGTIG INFORMATION – LÆS MIG!

En genstart af services og evt. server kan være nødvendig for at ændringer udført via denne vejledning kan ses fra klienter!

Bemærk GlobalSign har et specielt intermediate certifikat til Exchange 2007-2010 og Lync/OCS uden SGC som er krævet for fuld kompatibilitet.



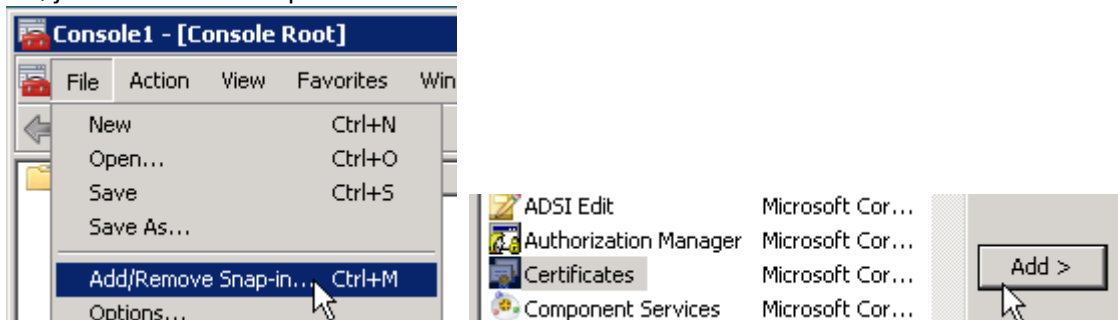
Import af mellemsteder certifikat ("Intermediate Certificate Authority")

Følgende beskriver hvordan mellemsteder certifikater installeres på en Microsoft Windows baseret server (derved også en Exchange server). For at sikre at klienter kan godkende mellemsteder i certifikatet, skal certifikatets mellemsteders offentlige certifikat installeres på serveren. Ved modtagelse af et GlobalSign certifikat, vil du også modtage de offentlige certifikater for mellemstederne.

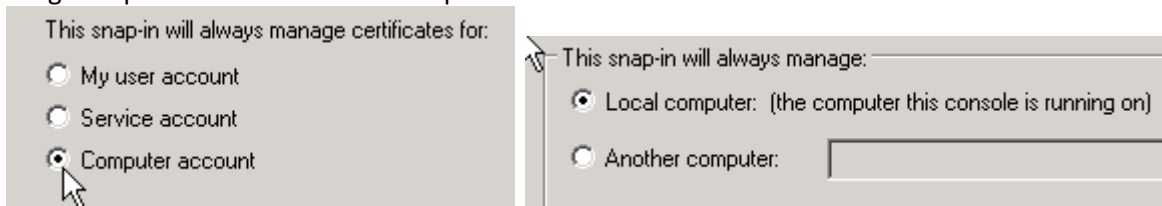
1. Log ind på serveren med en konto der er medlem af gruppen "Administrators" på den lokale server.
2. Kopier teksten med mellemsteder certifikatet ("Intermediate certificate"), fra e-mailen med dit nye certifikat, til en simpel tekst editor (som Notepad). Gem filen på skrivebordet, med filnavnet "mellemsteder.cer".
3. Start en MMC konsol som administrator på maskinen (hvis promptet vælg continue)



4. Tilføj en Certificates snap-in til MMC konsollen

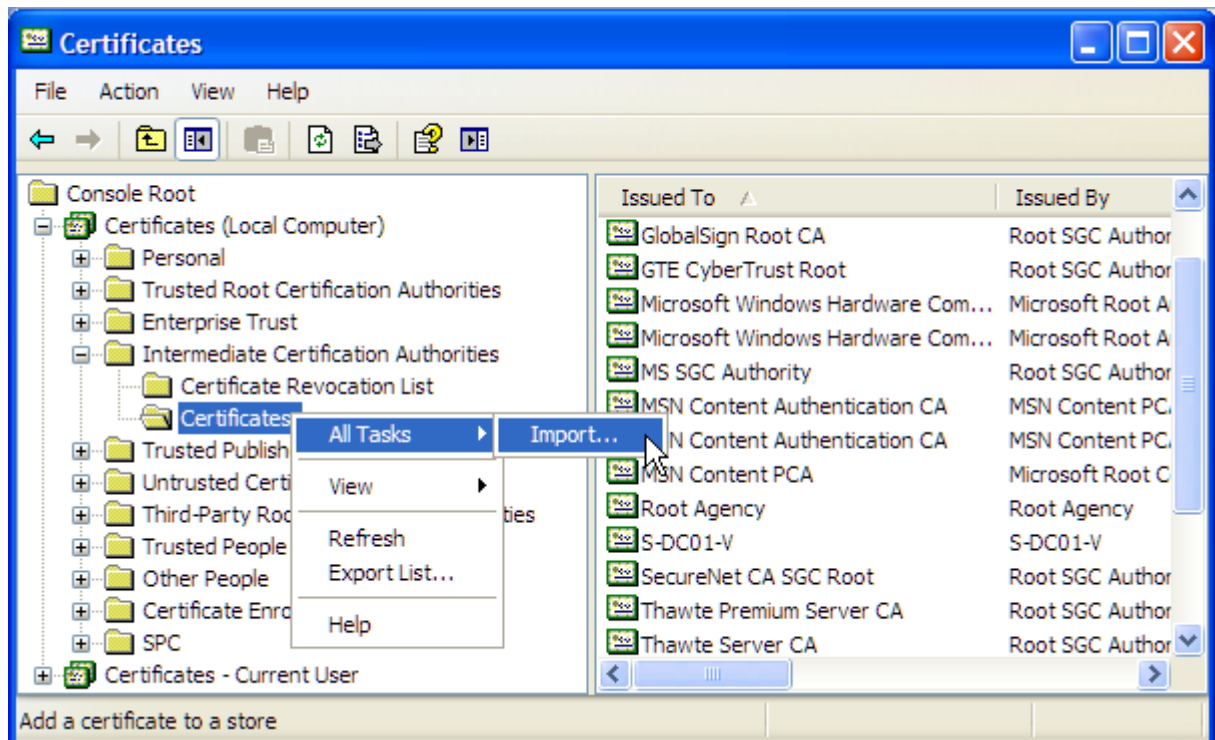


5. Vælg Computer Account > Local Computer



6. Under "Certificates (Local Computer)" udvid "Intermediate Certification Authorities" > "Certificates".

7. Højre klik på "Certificates" og vælg "All-Tasks" og "Import".



8. Følg instruktionerne og vælg den gemte fil på skrivebordet.
9. Herefter tryk næste indtil certifikatet er installeret.

Certifikatet vil blive vist på listen over "Intermediate Certification Authorities" og er nu installeret.

Husk at det kan være nødvendigt at genstarte services eller serveren efter installationen for at reloadere certifikater!

Test at installationen er gennemført korrekt ved at teste serveren på <https://www.fairssl.dk/ssltest/>

Intermediate certifikater

Følgende intermediate certifikater kan gemmes som en fil ved at gemme teksten i en simpel tekst editor som notepad, med filendelsen ".crt".

GlobalSign Intermediates

Nyeste GlobalSign intermediate certifikater kan altid hentes fra GlobalSign's support side her

<http://www.globalsign.com/support/intermediate-root-install.php>

For certifikater udstedt før den 26. juni 2011 kan intermediate certifikater hentes her

<http://www.globalsign.com/support/intermediate-root-install-old.php>

GlobalSign DomainSSL – For certifikater udstedt efter 26. juni 2011

```
-----BEGIN CERTIFICATE-----
MIIEhTCCA22gAwIBAgILBAAAAAABL07hPxEdQYJKoZIhvcNAQEFBQAwVzELMAkG
A1UEBHMCMQkUxGTAxBGNVBAoTEEdsb2JhbFNpZ24gbnYtc2ExEDAOBgNVBAsTB1Jv
b3QgQ0ExGzAZBgNVBAMTEkdsb2JhbFNpZ24gUm9vdCBDQTAeFw0xMTA0MTMxMDAw
MDBaFw0yMjA0MTMxMDAwMDBaMFcxZzAJBGNVBAYTAkJFMRkwFwYDVQQKEXBHbG9i
YWxTaWduIG52LXNhMS0wKwYDVQQDEyRHbG9iYWxTaWduIERvbWVpbiBwYXpZGF0
aW9uIENBIC0gRzIwggEiMA0GCSqGSIb3DQEBAQUAA4IBDwAwggEKAoIBAQCo83A
3zNAJuveWteUZtQBY8wzRIng4rjCRw2PrWmGHKhZQgvxcvstrLURcoMi9lbnLsVn
cZ0AHDK84+0uCEWp5vrDYyDBcFvS9AmSgv2G0XATX6TvA0nh00wo+nGJibdLR/Y
i8POGdBb/Aif5NjiNeSgaKb2DaN0YEKyl4IkjkGk8i5eto6nbtlsfw07JDVq0Ktb
aveXAgA/UaanbnPKdw12fJu2MBoanPcfKHsOi0cf538FjMbJyLvP6dx6QS6hhtrU
ObLiE0CmqDr6D1MeT+xumAkbypp3s1WFhekuFrWdXlTxSnpsObpuFwY0s7JC4ffz
nJoLEUTeaniOsRNPAGMBAAGjggFQMIIBTDAOBgNVHQ8BAf8EBAMCAQYwEgYDVR0T
AQH/BAGwBgEB/wIBADAdBgNVHQ4EFgQUlq36sFu5g2QqdsIcimnaQtz+/SgwRwYD
VR0gBEAwPjA8BgRVHSAAMDQwMgYIKwYBBQUHAQEwJmh0dHBzOi8vd3d3Lmdsb2Jh
bHNpZ24uY29tL3JlcG9zaXRvcnkvdMDMGA1UdHwQSMCOWKKAmoCSGImh0dHA6Ly9j
cmwuZ2xvYmFsc2lnbi5uZXQvcmluZ291cm9vdC5jcmwwPQYIKwYBBQUHAQEEMTAw
MC0GCCsGAQUFBzABhiFodHRwOi8vb2NzcC5nbG9iYWxzaWduLmNvbS9yb290cjEw
KQYDVR0LBCIwIAYIKwYBBQUHAwEGCCsGAQUFBwMCAgorBgEEAYI3CgMDMB8GA1UdIwQYMBAA
FGB7ZhpFDZfKiVAvfQTNNKj//P1LMA0GCSqGSIb3DQEBBQUAA4IBAQB+mhM5cWmg
/IwlrK+01t5k6jNvlVOSca1MwPvQa7qADsIK5jf60iWjIveJn1ISQy+7xPxszuSq
nfadV3vMKqx1SRtUZs+n6bmwwnXwI/uclwDyJaTZoQpdhQYdGof1LVTFZCGOrKrs
GT6b/8Bnpy4A4/GBQABbg+Kop+81UIPA9JuIKompqZwvgrkYnvrRyRuE+6yjPBC
N17mj5G8pV9RK667jHYxTlMRReewRTjhz5RpmcPSC93sQVfi7pcMd5dP2vPootjEQ
1f6RI6QhP7pMkY+Hx4KrOMIBc41IGvkMkMv+20hXwPIv3t073txebU+cyPRWtym
DOEtZGWRvsK5
-----END CERTIFICATE-----
```

GlobalSign DomainSSL til Exchange og Lync/OCS – Efter 26. juni 2011

```
-----BEGIN CERTIFICATE-----
MIIEWjCCA0KgAwIBAgILBAAAAAABL07hQUMwDQYJKoZIhvcNAQEFBQAwVzELMAkG
A1UEBhMCQkUxGTAXBgNVBAoTEEdsb2JhbFNpZ24gbnYtc2ExEDAoBgNVBAsTB1Jv
b3QgQ0ExGzAZBgNVBAMTEkdsb2JhbFNpZ24gUm9vdCBDQTAeFw0xMTA0MTMxMDAw
MDBaFw0yMjA0MTMxMDAwMDBaMFcxZzAJBGNVBAYTAkJFMRkwFwYDVQQKExBHbG9i
YWxTaWduIG52LXNhMS0wKwYDVQQDEyRHBG9iYWxTaWduIERvbWVpbiBwYXpZGF0
aW9uIENBIC0gRzIwggEiMA0GCSqGSIb3DQEBAQUAA4IBDwAwggEKAoIBAQCx083A
3zNAJuveWteUZtQBY8wzRIng4rjCRw2PrWmGHKhZQgvxcvstrLURcoMi9lbnLsVn
cZ0AHDK84+0uCEWp5vrdyIyDBcFvS9AmSgv2G0XATX6TvA0nh00wo+nGJibdLR/Y
i8POGdBb/Aif5NjiNeSgaKb2Dan0YEKy14IkjkGk8i5eto6nbtlsfw07JDVq0Ktb
aveXAgA/UaanbnPKdw12fJu2MBoanPcfKHsOi0cf538FjMbJyLvP6dx6QS6hhtrU
ObLiE0CmqDr6D1MeT+xumAkbypp3s1WFhekuFrWdXlTxSnpsObpuFwY0s7JC4ffz
nJoLEUTeaniOsRNPAGMBAAGjggE1MIIBITAOBgNVHQ8BAf8EBAMCAQYwEgYDVR0T
AQH/BAGwBgEB/wIBADAdBgNVHQ4EFgQUlq36sFu5g2QqdsIcimnaQtz+/SgwRwYD
VR0gBEAwPjA8BgRVHSAAMDQwMgYIKwYBBQUHAQEwJmh0dHBzOi8vd3d3Lmdsb2Jh
bHNpZ24uY29tL3JlcG9zaXRvcnkvdMDMGA1UdHwQSMCOWKKAoCSGImh0dHA6Ly9j
cmwuZ2xvYmFsc2lnbi5uZXQvc29vdC5jcmwwPQYIKwYBBQUHAQEEMTAwMC0GCCsG
AQUFBzABhiFodHRwOi8vb2Nzc25nbG9iYWxzaWduLmNvbS9yb290c290c290c290c2
BBGwFoAUyHtmGkUN18qJUC99BM00qP/8/UswDQYJKoZIhvcNAQEFBQADggEBADrn
/K6vBUOAJ3VBX6jwKI8fj4N+sri6rnUxJ4i15b10BEPsregTAKPbGQEWnmw8Un9c
3qtnw4QEVFGZnmMvvdW3wNXaAw5J0+Gzkk/fkk59riJqzti8/Hyua7aK6kVikBHT
C3GnXgYi/0046rk6bslnGgJ/S/O/DnlvvtUpM1lKHZYIm3CP9x5cRnt00J20U8gS
AhsNuzLrWV05PhtWjRXI8UI/d/4f5W2eZh+r2rKDV7QMIitKGVNoy18DtcIV8k6rw
19w5EdLYieuNkKO2UCXLBnmw2/7ifS45Jjwh8550/DeNr8DBAA9+e+eqWek9IY+
I5e4KnHi7f5piGe/Jlw
-----END CERTIFICATE-----
```

GlobalSign Organization – For certifikater udstedt efter 26. juni 2011

```
-----BEGIN CERTIFICATE-----
MIIEizCCA3OgAwIBAgILBAAAAAABL07hQvkwDQYJKoZIhvcNAQEFBQAwVzELMAkG
A1UEBhMCQkUxGTAXBgNVBAoTEEdsb2JhbFNpZ24gbnYtc2ExEDAoBgNVBAsTB1Jv
b3QgQ0ExGzAZBgNVBAMTEkdsb2JhbFNpZ24gUm9vdCBDQTAeFw0xMTA0MTMxMDAw
MDBaFw0yMjA0MTMxMDAwMDBaMFcxZzAJBGNVBAYTAkJFMRkwFwYDVQQKExBHbG9i
YWxTaWduIG52LXNhMTMwMQYDVQQDEyRHBG9iYWxTaWduIE9yZ2FuaXphdGlvbiBw
YXpZGF0aW9uIENBIC0gRzIwggEiMA0GCSqGSIb3DQEBAQUAA4IBDwAwggEKAoIB
AQDdNR3yIFQmGtDvpW+Bd1lw3Of01AMkHyQOnSkf1Ccyeit87ovjYWI4F6+0S3qf
ZyEcLZVUunm6tsTyDSF0F2d04rFkCJlgePtnwkv3J41vNnbPMYz18QbX3FcOW6zu
zi2rqqlwLwKGYLHQCAeV6irs0Z7kNlw7pja1Q4ur944+ABv/hVlrYgGNguhKujiz
4MP0bRmn6gXdhGfCZsckAnNate6kGdn8AM62pI3ffr1fsjqdhDFPyGMM5NgNuqN+
ARvUZ6UYKOsBp4I82Y4d5UcNuotZFKmfH0vq4idGhs6dOcRmQafiFSNrVkfB7cVT
5NSAH2v6gEaYsgmmD5W+ZoiTAgMBAAGjggFQMIIBTDAoBgNVHQ8BAf8EBAMCAQYw
EgYDVR0TAAQH/BAGwBgEB/wIBADAdBgNVHQ4EFgQUXUayjcrLdBy77fVztjq3OI91
nn4wRwYDVR0gBEAwPjA8BgRVHSAAMDQwMgYIKwYBBQUHAQEwJmh0dHBzOi8vd3d3L
mdsb2JhbHNpZ24uY29tL3JlcG9zaXRvcnkvdMDMGA1UdHwQSMCOWKKAoCSGImh0
dHA6Ly9jcmwuZ2xvYmFsc2lnbi5uZXQvc29vdC5jcmwwPQYIKwYBBQUHAQEEMTAw
MC0GCCsGAQUFBzABhiFodHRwOi8vb2Nzc25nbG9iYWxzaWduLmNvbS9yb290c290c2
KQYDVR0lBCIwIAYIKwYBBQUHAwEGCCsGAQUFBwMCGorBgEEAYI3CgMDMB8GA1Ud
IwQYMBAAFGB7ZhpFDZfKiVAvfQTNNKj//P1LMA0GCSqGSIb3DQEBBQUAA4IBAQBz
euwBLBcikZrKsWcYorrIBYmSJN4fuKtEn/dAVWXY4PQuX96wP5kVH5VwgumbSmQk
IBbwdhfSG/6s+ga0d8+Y2CrsVxXYXk7di5bhUzMZkdWEbiXvD8utv9tLa1bMtdRA
PiZetln0xZDJCCSE37wmfYlp6/Rb/MgV3gkYRYazi03HazUnm2D2pFogWEmx2DVD
xjK7XjvESiHBoDteWSopztvVuv5dbf0AfvrxlDdhuQA5ZpapnLQeEe9V2LTYsMSl
rjIKL/gt9KKn/zbTXmOLThL3tSiAdeUL3CgVnc5qjmXF/wA889m56JxkqsFm3Mu
eufnIVkJjTChrfzKgxR4
-----END CERTIFICATE-----
```

GlobalSign Organization til Exchange og Lync/OCS - Efter 26. juni 2011

```
-----BEGIN CERTIFICATE-----
MIIEYDCCA0IqAwIBAgILBAAAAAABL07hRQwwDQYJKoZIhvcNAQEFBQAwVzELMAkG
A1UEBhMCQkUxGTAXBgNVBAoTEEdsb2JhbFNpZ24gbnYtc2ExEDAoBgNVBAsTB1Jv
b3QgQ0ExGzAZBgNVBAMTEkdsb2JhbFNpZ24gUm9vdCBDQTAeFw0xMTA0MTMxMDAw
MDBaFw0yMjA0MTMxMDAwMDBaMF0xCzAJBgNVBAYTAKJFMRkwFwYDVQKEXBHBG9i
YWxTaWduIG52LXNhMTMwMQYDVQQDEYpHbG9iYWxTaWduIE9yZ2FuaXphdGlvbiBW
YWxpZGF0aW9uIENBIC0gRzIwggEiMA0GCSqGSIb3DQEBAQUAA4IBDwAwggEKAoIB
AQDdNR3yIFQmGtDvpW+Bd1lw3Of01AMkHyQOnSKf1Ccyeit87ovjYWI4F6+0S3qf
ZyEcLZVUunm6tsTyDSF0F2d04rFkCJlgePtnwkv3J41vNnbPMYz18QbX3FcOW6zu
zi2rqqlwLwKGYLHQCAeV6irs0Z7kn1w7pja1Q4ur944+ABv/hVlrYgGNguhKujiz
4MP0bRmn6gXdhGfCZsckAnNate6kGdn8AM62pI3ffr1fsjqdhDFPyGMM5NgNUqN+
ARvUZ6UYKOsBp4I82Y4d5UcNuotZFKmfH0vq4idGhs6dOcRmQafifSNrVkfB7cVT
5NSAH2v6gEaYsgmmD5W+ZoiTAgMBAAGjggE1MIIBITAOBgNVHQ8BAf8EBAMCAQYw
EgYDVR0TAQH/BAGwBgEB/wIBADAdBgNVHQ4EFgQUXUayjcrLdBy77fvztjq3OI91
nn4wRwYDVR0gBEAwPjA8BgRVHSAAMDQwMgYIKwYBBQUHAQEWFJmh0dHBzOi8vd3d3
Lmdsb2JhbHNpZ24uY29tL3JlcG9zaXRvcnkvdMDMGA1UdHwQSMCOWKKAmdCSGImh0
dHA6Ly9jcmwuZ2xvYmFsc2lnbi5uZXQvcn9vdC5jcmwwPQYIKwYBBQUHAQEEMTAw
MC0GCCSgAQUFBzABhiFodHRwOi8vb2Nzc25nbG9iYWxzawduLmNvbS9yb290c2Ew
HwYDVR0jBBgwFoAUyHtmGkUN18qJUC99BM00qP/8/UsWdQYJKoZIhvcNAQEFBQAD
ggEBABvgiADHBREc/6stSEJSzSBo53xBjCEnxSxZZ6CaNduzUKcbYum10/q2IQen
fPMOK25+Lk2TnLryhj5jiBDY2FQetuHrh70t8ylgCoXtwtI7yw07VKoI5lks/Z
9oL2dLLfCbvGSuXL+Ch7rkXIkg/pfcNYNUNUuflWP63n41edTzGQfDPgVRJECYX
pOBWYdw9P91nbHZF2krqhrhqkYE/Ho9aq9nNgSvBznWygI/1h01fwlrlkMbawb30
hag8IyrhFHvBN91i0ZJsumB9iOQct+R2UTjEqUdOqCsukNK1OFHrwZyKarXMsh3o
wFZUTKiL8IkyhtyTMr5NGvoldbU=
-----END CERTIFICATE-----
```

GlobalSign Extended

```
-----BEGIN CERTIFICATE-----
MIIEmDCCA4CgAwIBAgILBAAAAAABIG08FMUwDQYJKoZIhvcNAQEFBQAwTDEgMB4G
A1UECXMxR2xvYmFsc2lnbiBSb290IENBIC0gUjIxZzZARBgNVBAoTCKdsb2JhbFNp
Z24xZzZARBgNVBAMTCkdsb2JhbFNpZ24wHhcNMjE1MjE1MTUwMDAwGjE1MDcwMDAw
WjBiMR8wHQYDVQQLExZFHRlbnR1ZCBWYXpZGF0aW9uIENBMRMwEQYD
VQQKEwpHbG9iYWxTaWduMSowKAYDVQQDEYpHbG9iYWxTaWduIEV4dGVuZGVkIFZhbG9i
bG9iYXRpZ24gQ0EwggEiMA0GCSqGSIb3DQEBAQUAA4IBDwAwggEKAoIBAQC1Emt6
QwnnRLFD0fgyHn2XJotkPy/ieGsyjWyyRakXgmd/EWgtkLNGhEAjYVDxE70u/758
XoXH2Q0c9e5Ecde4j4W2DkbMSSM1ITs1+1AtS33NK1Q/j+opI+qTDvYqhzbeZtcO
c/Xc8P0H+cGPeqBI397N2xkYMMrYg/F5rDaKn6jA0onrYKttKlXFFQxjK8cLfljHO
wZsr+oalY032uubczjUhZs9YHMjzqi+My80kugG9J73V72nVdaHiorih7oivdX9f
8tIyEHclH2n5AmKEf4ond3/6tr6Zcq59rJtyD1jDy8gStbiA4cCxnNHRhjX8cXwg
Lva4p7D8hCA2NoaZAgMBAAGjggFjMIIBXzAOBgNVHQ8BAf8EBAMCAQYwEgYDVR0T
AQH/BAGwBgEB/wIBADBgNVHSAEPzA9MDsGBFUdIAAwMzAxBggrBgEFBQcCARY1
aHR0cDovL3d3dy5nbG9iYWxzawduLm5ldc9yZXBvc210b3J5LzAdBgNVHQ4EFgQU
NLH5yYxrNUTMCGkK7uOjuVy/FuAwNgYDVR0fBC8wLTAroCmgJ4YlaHR0cDovL2Ny
bC5nbG9iYWxzawduLm5ldc9yb290LXIyLmNybDBEBGgrBgEFBQcCBAQQ4MDYwNAYI
KwYBBQUHMAGGKgh0dHA6Ly9vY3NwLmdsb2JhbHNpZ24uY29tL0V4dGVuZGVkU1NM
Q0EwEQYJYIZIAAYb4QgEBBAQDAgIEMCAGA1UdJQQZMBcGCisGAQQBgjckAwMGCGC
SAGG+EIEATAfBgNVHSMGDAWGSB4gdXZxwewGoG3lm0mi3f3BmGLjANBqkqhkiG
9w0BAQUFAAOCAQEAgjptrWhnUYSEbidPudkEgnfANTETyobGM8M5TaPLpL0JpzRcX
DLD+ad0jK8fZIn2OL45stDHsNOPH4vXNWAR1/FMi84Lm3E61MSI9ucfqTPybZokJ
XkrXdUttuVMS/2eqvhhaoqfFGO7TMZAgNuoWp8F8ro9C2AM47Bs1E+8MVdZ/Duvj
koUnTO2IngpODI1civrUcr5HhGZze3CMjtkjfejkNW5gg0byMyBnAUHb1sfwX3cB3
8KkEYSNUf2VuS9UN811ZObhHzTyPr5TCkUJ+BK2ZPQm/6x+ujNsCr7Zeh7n09LWg
cfeRNrdGKOurYgly9fYFM9G083hngPWK0N477g==
-----END CERTIFICATE-----
```

AlphaSSL Intermediates

Nyeste AlphaSSL intermediate certifikater kan altid hentes fra AlphaSSL's support side her

<http://www.alphassl.com/support/install-root-certificate.html>

Nyeste intermediate certifikat, samt intermediate certifikat til certifikater udstedt før 30. maj 2011 kan

findes her <http://www.alphassl.com/support/install-root-certificate.html>

AlphaSSL Intermediate Root CA – For certifikater udstedt efter 30. maj 2011

```
-----BEGIN CERTIFICATE-----
MIIEELzCCAaxegAwIBAgILBAAAAAABL07hNwIwDQYJKoZIhvcNAQEFBQAwVzELMAkG
A1UEBHMCMQkUxGTAxBGNVBAoTEEdsb2JhbFNpZ24gbnYtc2ExEDA0BgNVBAsTB1Jv
b3QgQ0ExGzAZBgNVBAMTEkdsb2JhbFNpZ24gUm9vdCBDQTAeFw0xMTA0MTMxMDAw
MDBaFw0yMjA0MTMxMDAwMDBaMC4xETAPBgNVBAoTCEFscGhhU1NMMRkwFwYDVQOD
ExBBbHB0YVNTTCBDAQSAtIEcyMlIBIjANBgkqhkiG9w0BAQEFAAOCAQ8AMIIBCgKC
AQEAw/Blin8b3caChy/JC7pUxmM/RnWsSxQfmHKLHBD/Calsbi9l32WEP1+Bstjx
T9fwWrvJr9Ax3SZGKpme2KmjtrgHxMlX95WE79LqH1Sg5b7kQSFWMRBkfr5jjpXX
XDygLt5n3MiaIPBlyLC2J4Hr1w3uIkWlwi80J+zgWRJRsx4F5Tgg0mlZelkXvhpL
OQgSeTObZGj+WIHdiAxqulm0ryRPyEDK/Bda0jxyq6dMt7nqLeP0P5miTcgdWPh/
UzW0lyKiT2F2CBMTaWawV1kTMQpwgiuT1/biQBxQHqFyxxNYalrsGYkWPoDIjYYq
+jfwNTLd7OX+gI73Bwe0i0J1NQIDAQABo4IBIzCCAR8wDgYDVR0PAQH/BAQDAgEG
MBIGAlUdEWEB/wQIMAYBAf8CAQAwhQYDVR0OBByEFBTqGVXwDg0yxh90M7eOZhpM
EjEeMEUGAlUdIAQ+MDwwOgYEVROgADAYMDAGCCsGAQUFBwIBFiRodHRwczovL3d3
dy5hbHB0YXNzbc5jb20vcmluLm5ldlc9yb290LmNybDA9BggrBgEFBQcBAQQxMC8w
LQYIKwYBBQUHMAGGIWh0dHA6Ly9vY3NwLm5ldlc9yb290LmNybDA9BggrBgEFBQcBA
BgNVHSMEGDAWgBRge2YaRQ2Xyo1QL30EzTSo//z9SzanBgkqhkiG9w0BAQUFAAOC
AQEABjBcm89JAn6J6fWDWj0C87yyRt5KUO65mpBz2qBcJsqrA6ts5T6KC6y5kk/
UHc0lS9o82U8nxTYaGCStvWEDfakGKfPya3jnWhbvJ4LOFmNIdoj+pmKCbKfpy61
VWxH50Hs5uJ/r1VEOeCsd05l0/qrUUgw8T53be3kD0CY7kd/jbZYJ82Sb2AjzAKb
WSh4o1Gd0Egc5ZNemI/L7z/K/uCvpMlbbkBYpZItvV1lVcW/fARB2aS1gOmUYAIQ
OG0ICNdTHC2Tr8kTe9RsxDrE+4CsuzpOVHrNTrM+7fh8EU6f9fMUvLmxMc72qi+1
+MPpZqmyIJ3E+LgDYqeF0RhjWw==
-----END CERTIFICATE-----
```

VeriSign Intermediates

Nyeste VeriSign intermediate certifikater kan altid hentes fra VeriSign's support side her.

https://knowledge.verisign.com/support/ssl-certificates-support/index?page=content&id=AR657&actp=LIST&viewlocale=en_US

GeoTrust Intermediates

Nyeste GeoTrust intermediate certifikater kan altid hentes fra GeoTrust's support side her.

https://knowledge.geotrust.com/support/knowledge-base/index?page=content&id=AR1421&actp=search&viewlocale=en_US&searchid=1279845857524

Thawte Intermediates

Nyeste Thawte intermediate certifikater kan altid hentes fra Thawte's support side her.

https://search.thawte.com/support/ssl-digital-certificates/index?page=content&id=AR1384&actp=search&viewlocale=en_US&searchid=1279845989670

